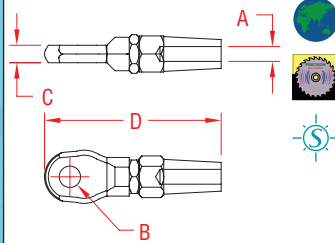




## QUICK ATTACH™ EYE



**316 STAINLESS STEEL**



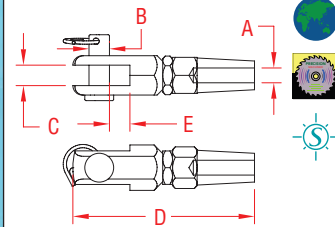
ITEM	A	B	C	D	WT
	(wire size)				(lb)
S0761-0003	1/8"	0.25"	0.23"	2.28"	0.10
S0761-0004	5/32"	0.33"	0.27"	2.68"	0.17
S0761-0005	3/16"	0.41"	0.31"	3.19"	0.23
S0761-0007	1/4"	0.50"	0.35"	3.82"	0.36
S0761-0009	5/16"	0.56"	0.41"	4.76"	0.60
S0761-0010	3/8"	0.64"	0.51"	5.23"	0.98
S0761-0013	1/2"	0.76"	0.59"	6.10"	1.50

**NOTE:**  
MECHANICAL SWAGE FITTING ALLOWS VERY FAST ATTACHMENT TO ANY TYPE OF CABLE (1X19, 7X19, OR 7X7) USING ONLY SIMPLE TOOLS. JAW AND EYE WILL FIT TOGETHER. WLL IS DETERMINED BY WLL OF WIRE USED.

## QUICK ATTACH™ JAW



**316 STAINLESS STEEL**



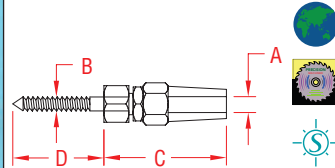
ITEM	A	B	C	D	E	WT
	(wire size)				(lb)	
S0762-0003	1/8"	0.24"	0.23"	2.48"	0.23"	0.12
S0762-0004	5/32"	0.31"	0.31"	2.87"	0.31"	0.22
S0762-0005	3/16"	0.39"	0.39"	3.27"	0.39"	0.32
S0762-0007	1/4"	0.47"	0.47"	3.74"	0.47"	0.52
S0762-0009	5/16"	0.55"	0.55"	4.65"	0.55"	0.77
S0762-0010	3/8"	0.63"	0.63"	5.24"	0.63"	1.38
S0762-0013	1/2"	0.71"	0.74"	6.10"	0.74"	2.10

**NOTE:**  
MECHANICAL SWAGE FITTING ALLOWS VERY FAST ATTACHMENT TO ANY TYPE OF CABLE (1X19, 7X19, OR 7X7) USING ONLY SIMPLE TOOLS. JAW AND EYE WILL FIT TOGETHER. WLL IS DETERMINED BY WLL OF WIRE USED.

## QUICK ATTACH™ WOOD STUD



**316 STAINLESS STEEL**



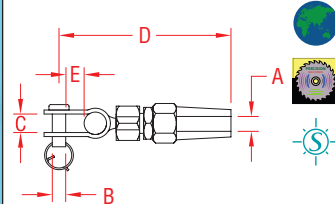
ITEM	A	B	C	D	WT
	(wire size)				(lb)
S0777-0703	1/8"	1/4"	1.46"	1.25"	0.11
S0777-0704	5/32"	1/4"	1.68"	1.25"	0.13
S0777-0905	3/16"	5/16"	2.02"	1.50"	0.24

**NOTE:**  
MECHANICAL SWAGE FITTING ALLOWS VERY FAST AND SIMPLE ATTACHMENT OF CABLE (1X19, 7X19, OR 7X7) TO WOOD USING ONLY SIMPLE TOOLS. WLL IS DETERMINED BY THE TYPE OF WOOD USED IN THE APPLICATION.

## QUICK ATTACH™ TOGGLE



**316 STAINLESS STEEL**



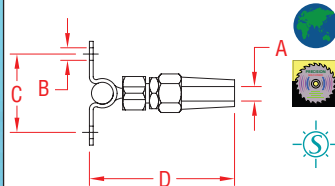
ITEM	A	B	C	D	E	WT
	(wire size)				(lb)	
S0778-0703	1/8"	0.23"	0.35"	2.53"	0.45"	0.12
S0778-0704	5/32"	0.23"	0.35"	2.75"	0.45"	0.14
S0778-0904	5/32"	0.31"	0.45"	2.98"	0.60"	0.20
S0778-0905	3/16"	0.31"	0.45"	3.14"	0.60"	0.26
S0778-1007	1/4"	0.37"	0.56"	4.19"	0.75"	0.42
S0778-1309	5/16"	0.47"	0.70"	5.15"	0.72"	0.76

**NOTE:**  
MECHANICAL SWAGE FITTING ALLOWS SELF-ALIGNING FOR A MORE FLEXIBLE CONNECTION SUCH AS BOAT LIFELINES OR ARCHITECTURAL APPLICATIONS. VERY FAST AND SIMPLE ATTACHMENT TO CABLE (1X19, 7X19, OR 7X7). WLL IS DETERMINED BY WLL OF WIRE USED.

## QUICK ATTACH™ WALL TOGGLE



**316 STAINLESS STEEL**



ITEM	A	B	C	D	WT
	(wire size)		(fastener)		(lb)
S0779-0703	1/8"	1/4"	1.58"	2.00"	0.10
S0779-0704	5/32"	1/4"	1.58"	2.25"	0.12
S0779-0905	3/16"	5/16"	2.00"	2.75"	0.22
S0779-1007	1/4"	3/8"	2.00"	3.50"	0.35

**NOTE:**  
MECHANICAL SWAGE FITTING ALLOWS ATTACHMENT TO A FLAT SURFACE WITH ALIGNMENT THROUGH 160° +/- . VERY FAST AND SIMPLE ATTACHMENT TO CABLE (1X19, 7X19, OR 7X7). WLL IS DETERMINED BY WLL OF WIRE USED.  
REFERENCE "FASTENER MATCHING CHART" (PAGE 164) FOR COMPATIBLE FASTENERS.

**LIMITED LIFETIME WARRANTY**

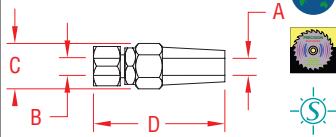
**SUNCOR STAINLESS®**

TEL 508-732-9191 • FAX 508-732-9798 • ORDERS ONLY 800-394-2222

www.suncorstainless.com

## QUICK ATTACH™ RECEIVER

316 STAINLESS STEEL

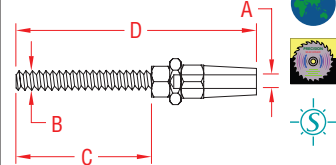


ITEM	A (wire size)	B (thread)	C	D	WT (lb)
S0770-0703	1/8"	1/4"	0.54"	1.46"	0.07
S0770-0704	5/32"	1/4"	0.63"	1.68"	0.12
S0770-0905	3/16"	5/16"	0.75"	2.02"	0.18
S0770-1007	1/4"	3/8"	0.84"	2.50"	0.28
S0770-1610	3/8"	5/8"	1.06"	3.62"	0.60
S0770-2013	1/2"	3/4"	1.25"	4.32"	0.96

**NOTE:**  
MECHANICAL SWAGE FITTING ALLOWS VERY FAST AND SIMPLE ATTACHMENT USING A BOLT OR STUD THROUGH A PLATE. WLL IS DETERMINED BY WLL OF WIRE USED. FOR USE WITH BOLTS OR SIMILAR FASTENERS.

## QUICK ATTACH™ STUD

316 STAINLESS STEEL



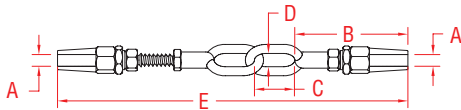
ITEM	A (wire size)	B (thread)	C	D	WT (lb)
<b>UNF RIGHT HAND</b>					
S0771-0703	1/8"	1/4"	1.85"	3.35"	0.11
S0771-0704	5/32"	1/4"	1.85"	3.62"	0.13
S0771-0904	5/32"	5/16"	2.25"	4.00"	0.15
S0771-0905	3/16"	5/16"	2.25"	4.37"	0.21
S0771-1005	3/16"	3/8"	2.48"	4.60"	0.23
S0771-1007	1/4"	3/8"	2.48"	5.04"	0.33
S0771-1307	1/4"	1/2"	3.15"	5.70"	0.39
S0771-1309	5/16"	1/2"	3.15"	6.38"	0.63
S0771-1609	5/16"	5/8"	3.94"	7.17"	0.75
S0771-1610	3/8"	5/8"	3.94"	7.40"	0.95
S0771-2013	1/2"	3/4"	4.82"	9.18"	1.64
<b>UNF LEFT HAND</b>					
S0772-0703	1/8"	1/4"	1.85"	3.35"	0.11
S0772-0704	5/32"	1/4"	1.85"	3.62"	0.13
S0772-0904	5/32"	5/16"	2.25"	4.00"	0.15
S0772-0905	3/16"	5/16"	2.25"	4.37"	0.21
S0772-1005	3/16"	3/8"	2.48"	4.60"	0.23
S0772-1007	1/4"	3/8"	2.48"	5.04"	0.33
S0772-1307	1/4"	1/2"	3.15"	5.70"	0.39
S0772-1309	5/16"	1/2"	3.15"	6.38"	0.63
S0772-1609	5/16"	5/8"	3.94"	7.17"	0.75
S0772-1610	3/8"	5/8"	3.94"	7.40"	0.95
S0772-2013	1/2"	3/4"	4.82"	9.18"	1.64

**NOTE:**  
MECHANICAL SWAGE FITTING ALLOWS VERY FAST AND SIMPLE ATTACHMENT TO CABLE (1X19, 7X19, OR 7X7) USING ONLY SIMPLE TOOLS. WLL IS DETERMINED BY WLL OF WIRE USED.

ITEM	A (wire size)	B (thread)	C	D	WT (lb)
<b>METRIC RIGHT HAND</b>					
S0775-0603	3 mm	6 mm	47 mm	85 mm	0.11
S0775-0604	4 mm	6 mm	47 mm	92 mm	0.13
S0775-0804	4 mm	8 mm	57 mm	102 mm	0.15
S0775-0805	5 mm	8 mm	57 mm	111 mm	0.21
S0775-1005	5 mm	10 mm	63 mm	117 mm	0.23
S0775-1006	6 mm	10 mm	63 mm	128 mm	0.33
S0775-1206	6 mm	12 mm	80 mm	145 mm	0.39
S0775-1208	8 mm	12 mm	80 mm	162 mm	0.63
S0775-1608	8 mm	16 mm	100 mm	182 mm	0.75
S0775-1610	10 mm	16 mm	100 mm	188 mm	0.95
S0775-2012	12 mm	20 mm	120 mm	222 mm	1.45

## QUICK ATTACH™ GATE EYES

316 STAINLESS STEEL

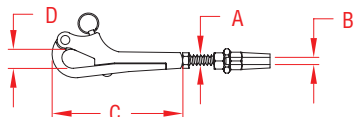


ITEM	A (wire)	B	C	D	E (overall length)	WT (lb)
<b>GATE EYE</b>						
S0776-1905	3/16"	4.07"	1.05"	0.59"	5.35"	0.25
<b>DOUBLE GATE EYE</b>						
S0776-2905	3/16"	2.92"	1.05"	0.59"	9.10"	0.45

**NOTE:**  
RIG A LIFELINE IN MINUTES. SUNCOR LIFELINE SYSTEMS UTILIZE OUR QUICK ATTACH™ SWAGELESS FITTINGS. USE GATE EYES WHERE A GATE IS NEEDED. REFER TO PAGE 48 FOR MORE INFORMATION ON THIS PRODUCT AND SUNCOR'S LIFELINE KITS.

## PELICAN HOOK W/ QUICK ATTACH™

316 STAINLESS STEEL

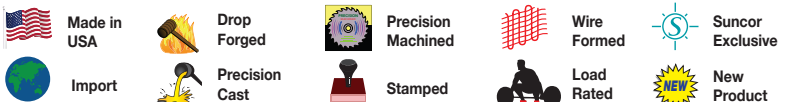


ITEM	A (thread)	B (wire)	C	D	WT (lb)
S0162-QA07	1/4"	1/8"	2.96"	0.50"	0.22
S0162-QA08	5/16"	3/16"	3.87"	0.64"	0.44
S0162-QA13	1/2"	1/4"	6.00"	1.00"	1.30

**NOTE:**  
ALL THREADS ARE RIGHT HAND "UNF". S0771-SERIES QUICK ATTACH™ STUDS ARE USED FOR THIS ASSEMBLY. INFORMATION REGARDING THE S0771-SERIES CAN BE FOUND ABOVE.



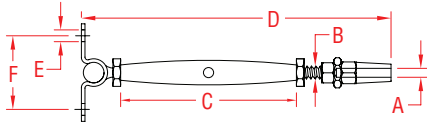
Key:



ORDERS ONLY: 800-394-2222 (USA+CANADA)



## QA™ STUD & WALL MOUNT 316 STAINLESS STEEL

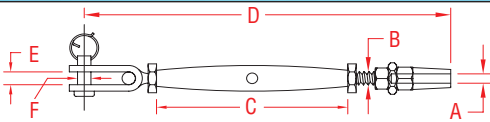


ITEM	A (wire size)	B (thread)	C	D	E	F	WT (lb)
S0766-0703	1/8"	1/4"	4.20"	6.75"	0.25"	1.58"	0.25
S0766-0704	5/32"	1/4"	4.20"	6.75"	0.25"	1.58"	0.27
S0766-0905	3/16"	5/16"	4.40"	7.30"	0.31"	2.00"	0.50
S0766-1007	1/4"	3/8"	4.90"	8.00"	0.38"	2.00"	0.74

**NOTE:**  
MECHANICAL SWAGE FITTING ALLOWS VERY FAST ATTACHMENT TO ANY TYPE OF CABLE (1X19, 7X19, OR 7X7) USING ONLY SIMPLE TOOLS. WLL IS DETERMINED BY WLL OF WIRE USED.

**REFERENCE "FASTENER MATCHING CHART" (PAGE 164) FOR COMPATIBLE FASTENERS.**

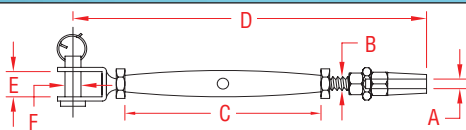
## QA™ STUD & TOGGLE 316 STAINLESS STEEL



ITEM	A (wire size)	B (thread)	C	D	E	F	WT (lb)
S0764-0703	1/8"	1/4"	4.20"	7.25"	0.35"	0.23"	0.25
S0764-0704	5/32"	1/4"	4.20"	7.50"	0.35"	0.23"	0.27
S0764-0904	5/32"	5/16"	4.40"	8.00"	0.40"	0.31"	0.44
S0764-0905	3/16"	5/16"	4.40"	8.31"	0.40"	0.31"	0.50
S0764-1005	3/16"	3/8"	4.90"	9.25"	0.56"	0.37"	0.64
S0764-1007	1/4"	3/8"	4.90"	9.75"	0.56"	0.37"	0.74
S0764-1307	1/4"	1/2"	5.98"	11.00"	0.63"	0.48"	1.30
S0764-1309	5/16"	1/2"	5.98"	12.25"	0.63"	0.48"	1.54
S0764-1609	5/16"	5/8"	7.66"	15.00"	0.80"	0.63"	2.75
S0764-1610	3/8"	5/8"	7.66"	15.75"	0.80"	0.63"	2.95

**NOTE:** MECHANICAL SWAGE FITTING ALLOWS VERY FAST ATTACHMENT TO ANY TYPE OF CABLE (1X19, 7X19, OR 7X7) USING ONLY SIMPLE TOOLS. WLL IS DETERMINED BY WLL OF WIRE USED.

## QUICK ATTACH™ STUD & JAW 316 STAINLESS STEEL



ITEM	A (wire size)	B (thread)	C	D	E	F	WT (lb)
S0765-0703	1/8"	1/4"	4.20"	7.00"	0.36"	0.23"	0.24
S0765-0704	5/32"	1/4"	4.20"	7.25"	0.36"	0.23"	0.26
S0765-0904	5/32"	5/16"	4.40"	7.52"	0.38"	0.31"	0.36
S0765-0905	3/16"	5/16"	4.40"	7.84"	0.38"	0.31"	0.42
S0765-1005	3/16"	3/8"	4.90"	8.86"	0.49"	0.37"	0.60
S0765-1007	1/4"	3/8"	4.90"	9.25"	0.49"	0.37"	0.71
S0765-1307	1/4"	1/2"	5.98"	10.81"	0.62"	0.48"	1.16
S0765-1309	5/16"	1/2"	5.98"	11.42"	0.62"	0.48"	1.36
S0765-1610	3/8"	5/8"	7.66"	14.51"	0.77"	0.63"	2.50

**NOTE:**  
MECHANICAL SWAGE FITTING ALLOWS VERY FAST ATTACHMENT TO ANY TYPE OF CABLE (1X19, 7X19, OR 7X7) USING ONLY SIMPLE TOOLS. WLL IS DETERMINED BY WLL OF WIRE USED.

## QUICK ATTACH™ WEDGE KIT



ITEM	A (wire size)	WT (lb)
P0760-W003-C	1/8"	0.03
P0760-W004-C	5/32"	0.03
P0760-W005-C	3/16"	0.04
P0760-W007-C	1/4"	0.05
P0760-W009-C	5/16"	0.08
P0760-W010-C	3/8"	0.11
P0760-W013-C	1/2"	0.13

**NOTE:**  
NOW YOU CAN REUSE YOUR QUICK ATTACH™ TURNBUCKLES AND HARDWARE WITH THIS LOW COST REPLACEMENT WEDGE KIT. IT FEATURES A BRONZE WASHER, 3-PART WEDGE AND WEDGE BAND. FOR USE WITH ALL SUNCOR QUICK ATTACH™ FITTINGS.

### Why Would You Want to Use Mechanical Fittings?

The advantage of Quick Attach™ over conventional fittings is the arrangement of the wedges on the outside of the cable which makes assembly much easier and allows different types of wire to be used with the same fitting.

Quick Attach™ fittings are ideal for repair of rigging without swaging and for many other industrial, or architectural uses where the exact length of the cable cannot be determined beforehand or where assembly needs to take place on-site. NOT FOR USE ON STANDING RIGGING ON BOATS.

**LIMITED LIFETIME  
WARRANTY**

**SUNCOR STAINLESS®**

TEL 508-732-9191 • FAX 508-732-9798 • ORDERS ONLY 800-394-2222

www.suncorstainless.com

# QUICK ATTACH™



## QUICK ATTACH™ LIFELINE KITS

Do It Yourself! Rig a Lifeline in Minutes using Simple Hand Tools



Compact Carrying Case

**3 EASY INSTALLATION STEPS**  
COMPLETE INSTRUCTIONS IN EACH KIT

**1** Disassemble

**2** Attach

**3** Lock

### QUICK ATTACH™ LIFELINE KIT W/ GATE DESIGNED FOR USE WITH 3/16" WIRE ROPE



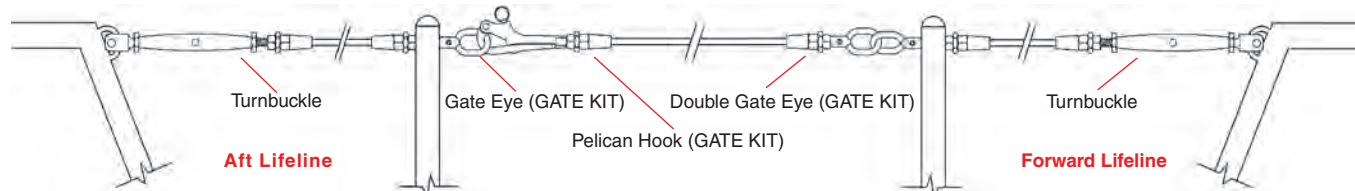
**CLOSED BODY TURNBUCKLES 316 STAINLESS STEEL**

**KIT INCLUDES:**

- 1 - QA Gate Eye
- 1 - QA Joined Gate Eye
- 2 - QA Closed Body Turnbuckles w/ Toggles
- 1 - QA Pelican Hook

ITEM	SIZE	ADJUSTMENT	WT
(QA turnbuckle)			(lb)
<b>LIFELINE KIT W/ GATE</b>			
C0747-LK01-X	3/16"	3.75"	3.08

**NOTE:**  
RIG A LIFELINE IN MINUTES, USING QUICK ATTACH™ TURNBUCKLES. MECHANICAL SWAGE FITTINGS OFFER SEAMLESS RESULTS, USING ONLY SIMPLE HAND TOOLS. THE QUICK ATTACH™ TURNBUCKLE WITH TOGGLE PROVIDES A SAFE AND SECURE ALTERNATIVE TO OPEN BODY FITTINGS AND ALLOWS FOR EASY TENSIONING.



### QUICK ATTACH™ LIFELINE KIT W/O GATE DESIGNED FOR USE WITH 3/16" WIRE ROPE



**CLOSED BODY TURNBUCKLE - 316 STAINLESS STEEL**

**KIT INCLUDES:**

- 1 - QA Toggle
- 1 - QA Closed Body Turnbuckle w/ Toggle

ITEM	SIZE	ADJUSTMENT	WT
(QA turnbuckle)			(lb)
<b>LIFELINE KIT W/O GATE</b>			
C0747-LK03-X	3/16"	3.75"	1.66

**NOTE:**  
RIG A LIFELINE IN MINUTES, USING QUICK ATTACH™ TURNBUCKLES. MECHANICAL SWAGE FITTINGS OFFER SEAMLESS RESULTS, USING ONLY SIMPLE HAND TOOLS. THE QUICK ATTACH™ TURNBUCKLE WITH TOGGLE PROVIDES A SAFE AND SECURE ALTERNATIVE TO OPEN BODY FITTINGS AND ALLOWS FOR EASY TENSIONING.



### STAINLESS WIRE ROPE SOLD SEPARATELY AND OFFERED IN A VARIETY OF LENGTHS



ITEM	WIRE	PVC	LENGTH	WLL	BL	WT
		(diameter)			(lb)	(lb)
		(diameter)			(lb)	(lb)
<b>WHITE PVC COATED - 7X7 STRAND</b>						
S0708-0508-30-C	3/16"	5/16"	30 FT.	620	3,100	2.70
S0708-0508-40-C	3/16"	5/16"	40 FT.	620	3,100	3.60
S0708-0508-50-C	3/16"	5/16"	50 FT.	620	3,100	4.50
<b>UNCOATED - 1X19 STRAND</b>						
S0701-0005-30-C	3/16"	N/A	30 FT.	840	4,200	2.40
S0701-0005-40-C	3/16"	N/A	40 FT.	840	4,200	3.20
S0701-0005-50-C	3/16"	N/A	50 FT.	840	4,200	4.00

**NOTE:**  
FOR USE WITH QUICK ATTACH™ LIFELINE KITS. WIRE ROPE IS AVAILABLE IN A 1X19 CONSTRUCTION OR PVC COATED 7X7 WIRE IN WHITE. 1X19 WIRE IS LEFT HAND LAY. 7X7 PVC COATED WIRE IS RIGHT HAND LAY.



**Key:**

- Made in USA
- Drop Forged
- Precision Machined
- Wire Formed
- Suncor Exclusive
- Import
- Precision Cast
- Stamped
- Load Rated
- New Product

ORDERS ONLY: 800-394-2222 (USA+CANADA)

All logos, icons, images, measurements and descriptions are the sole property of Suncor Stainless, Inc. © 2020 Suncor Stainless, Inc.